

Disney

THE

LION KING

©Disney



**Hair + Make-Up**

# Lioness/Pride

## Hair



Middle part with a slicked back low bun

## Make-Up



Base show make-up  
(Foundation, blush, brown eye shadows, dark red lip, dark eyebrows)

5 gold dots above each eyebrow, 5 dots down the nose, 1 line down the bottom lip to under the chin.



# Hyenas

## Hair



Middle part with a  
slicked back low bun

## Make-Up

Base show make-up

(Foundation, blush, brown eye  
shadows, dark red lip, dark  
eyebrows)



1 red line down the nose, red  
lines on top of the cheekbones,  
1 red line going from the bottom  
lip to under the chin

# Grasslands

## Hair



Middle part with a slicked back low bun

## Make-Up

Base show make-up

(Foundation, blush, brown eye shadows, dark red lip, dark eyebrows)



1 green line down the nose, green lines on top of the cheekbones, 1 green line going from the bottom lip to under the chin

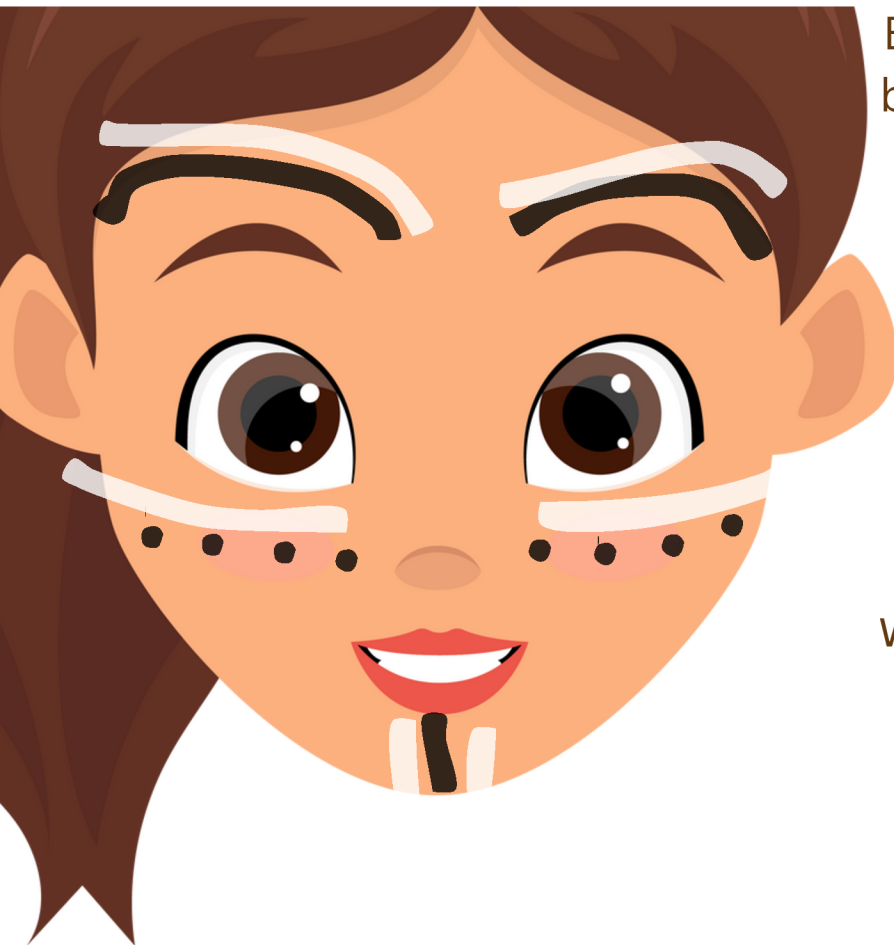
# Animals (part 1)

## Hair



Middle part with a slicked back low bun

## Make-Up for Zebra



Base show make-up (Foundation, blush, brown eye shadows, pink lip, dark eyebrows)

Black line arched over eyebrow, with white above the black line.

White line on cheek bone with 4 black dots underneath white line. Two white line from bottom lip to under chin with black line in between

# Animals (part 2)

## Make-Up for Elephant



Base show make-up  
(Foundation, blush, brown eye  
shadows, pink lip stick)

Gray line arched over eyebrow,  
with pink above the gray line.  
Pink line on cheek bone with 4  
gray dots underneath white  
line. Two pink lines from  
bottom lip to under chin with  
gray line in between

## Make-Up for Monkey + Giraffe



Base show make-up  
(Foundation, blush, brown eye  
shadows, pink lip stick)

Brown line arched over  
eyebrow, with white above the  
brown line.  
White line on cheek bone with 4  
brown dots underneath white  
line. Two white line from bottom  
lip to under chin with brown line  
in between



# Y/O Simba

## Y. Simba Hair



Dutch  
braid in a  
low bun

## Make-Up

Instead of white do gold.



Orange triangle pointing down  
with gold lines outlining it. 5  
gold dots above eyebrow.  
Orange line across the face on  
cheek bones with gold line  
underneath. Two gold line  
from bottom lip to under chin  
with orange line in between

# Y/O Nala

## Y. Nala Hair



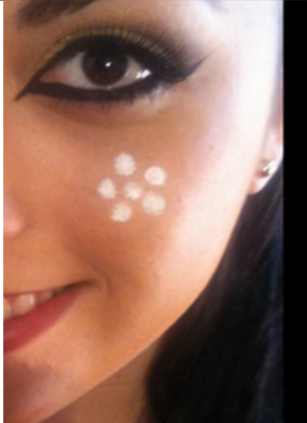
Two space buns  
with a middle part.

## Make-Up

Base show make-up  
(Foundation, blush, brown eye  
shadows, dark red lip, dark  
eyebrows)

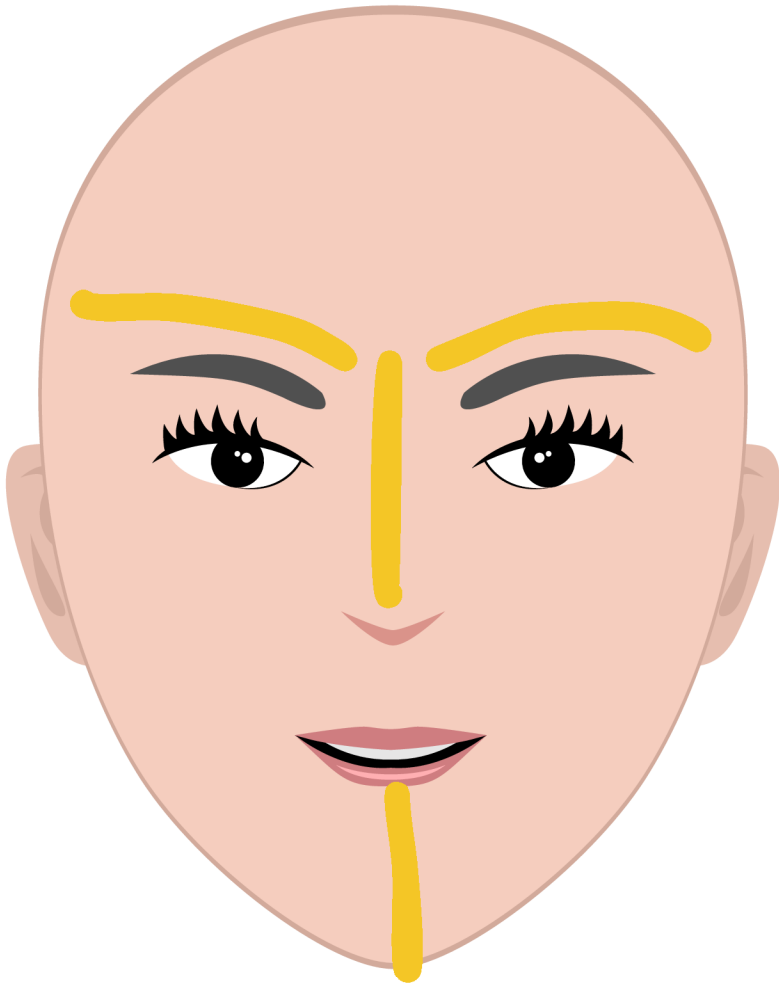
5 gold dots above each  
eyebrow, 5 dots down the nose,  
1 line down the bottom lip to  
under the chin.

Add 6 dot flower on left cheek.



# Mufasa

## Make-Up

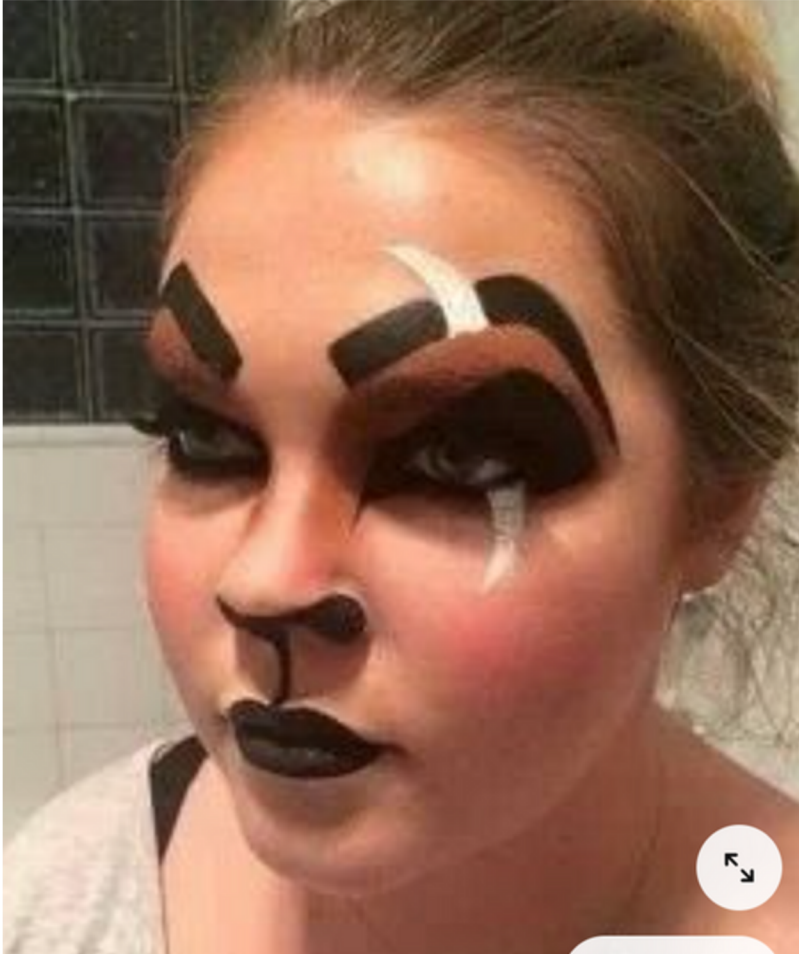


Dark eyebrows

Yellow arch above the eyebrows, with yellow line going down the nose. Yellow line going from bottom lip down to underneath the chin.

# Scar

## Make-Up



We were thinking about something like this for Scar. You can modify as much as you need.



# Zazu

## Hair



Middle part with a  
slicked back low bun

## Make-Up



Blue, white, orange  
and blue lip stick!

# Timon

## Hair



Middle part with a  
slicked back low bun

## Make-Up



Base show make-up  
(Foundation, blush,  
brown eye shadows)

Wide nose with dark  
eye brows.

# Pumba

## Hair



Even though there is a wig, it didn't seem like it would fit all of the hair underneath

Middle part with a slicked back low bun

## Make-Up



Base show make-up  
(Foundation, blush,  
brown eye shadows)

Bushy eyebrows,  
Brown lines down on  
forehead and circle  
around cheeks.

# Rafiki

## Hair



Middle part with a  
slicked back low bun

## Make-Up



Blue, red, yellow, white  
face paint